



Holo

Produced by Torfehnegar company

:

SQL Server

ME

(Epson - LQ

(/ , - , * , & , @ , \$, # , ...)

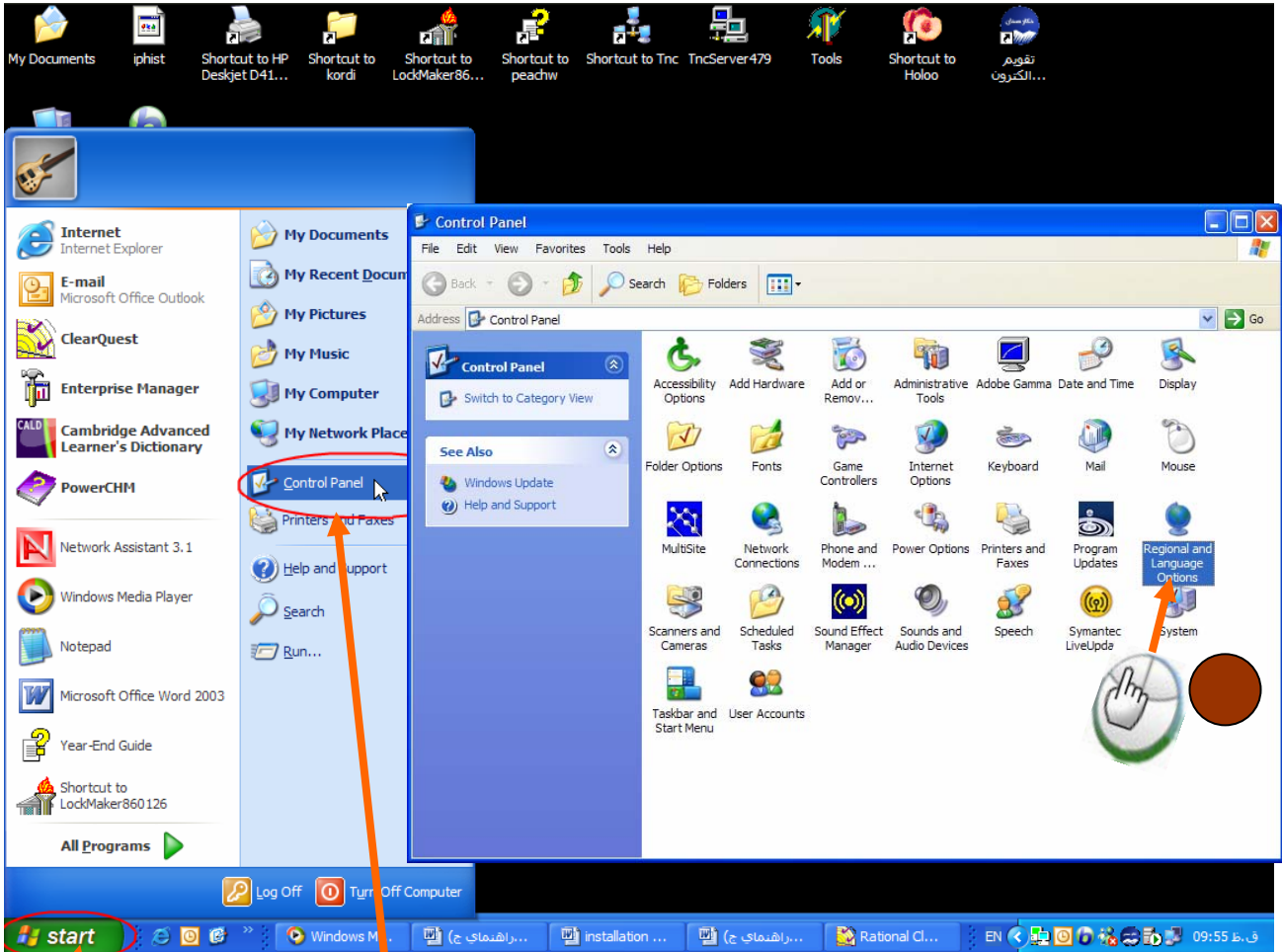
Hand cursor icon in the top right corner.



Holoo

Produced by Torfehnegar company

(XP)



Start
Control Panel

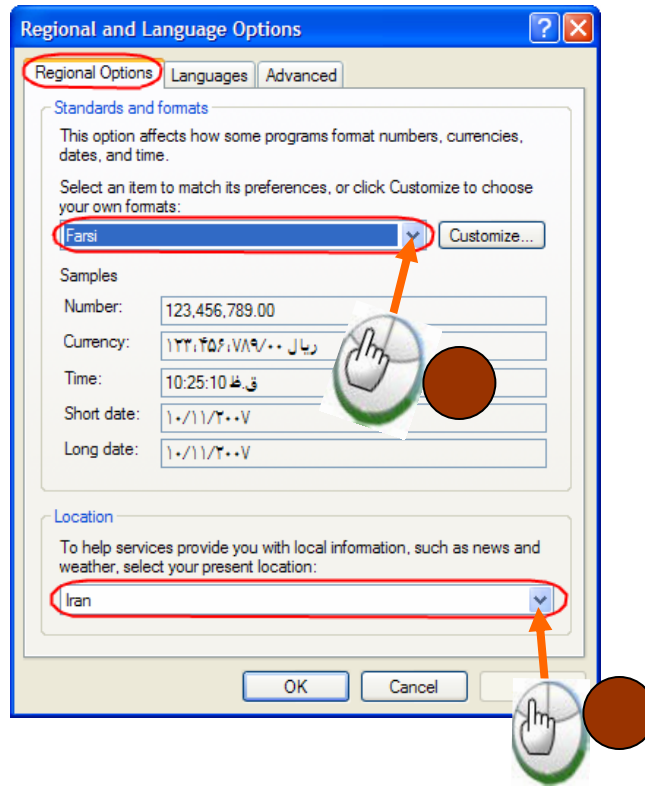
Regional and Language Options
Advanced Languages Regional Options



Holoo

Produced by Torfehnegar company

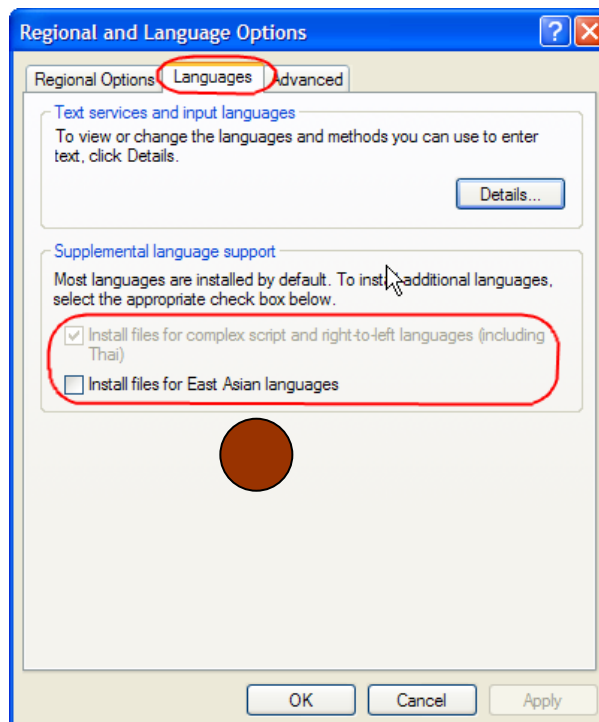
Iran Farsi



Install files for complex scripts and right to left languages

Install files for east asian languages

(including Thai)



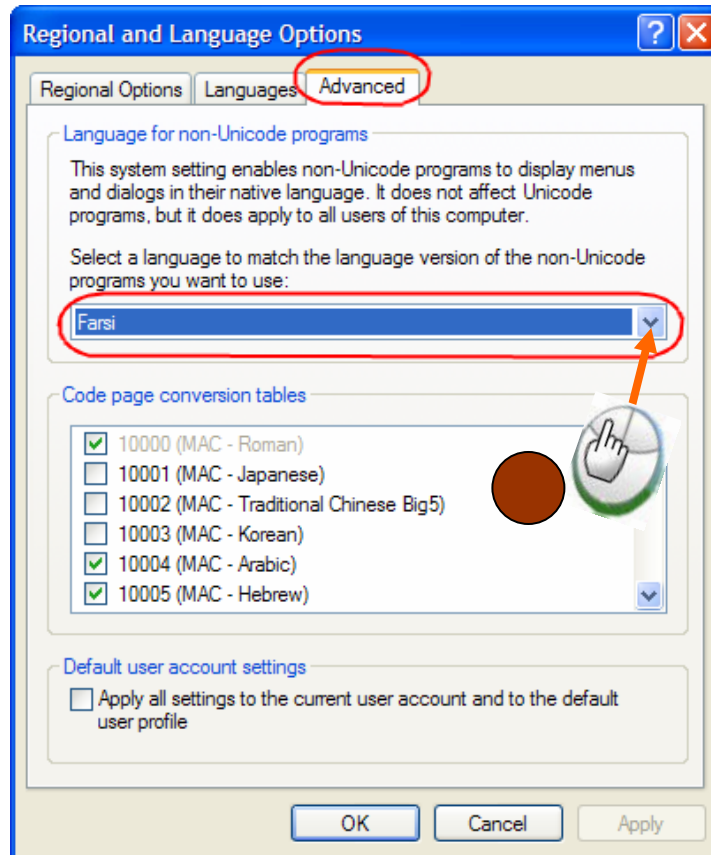


Holoo

Produced by Torfehnegar company

Farsi

Farsi



(ME)

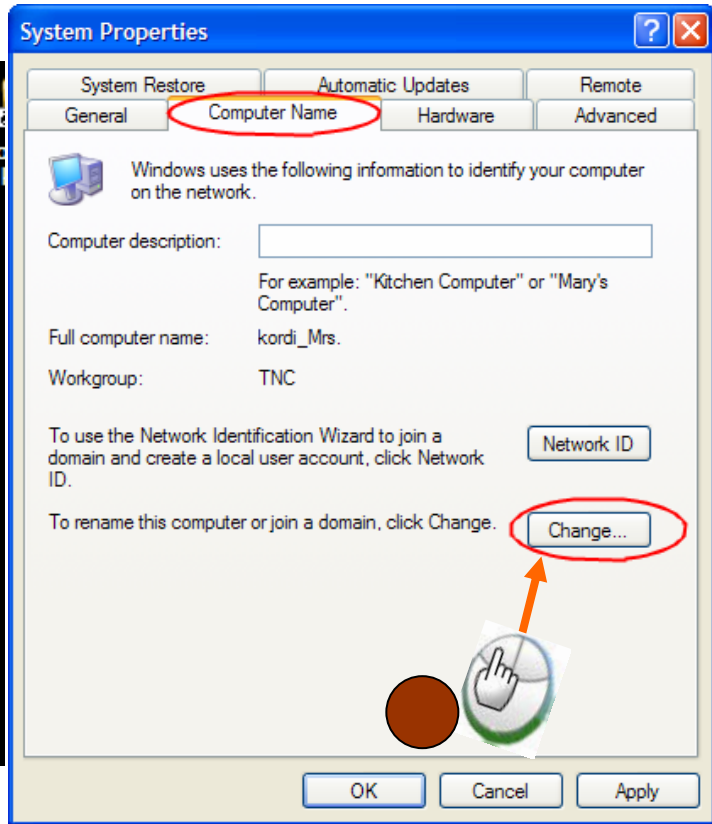
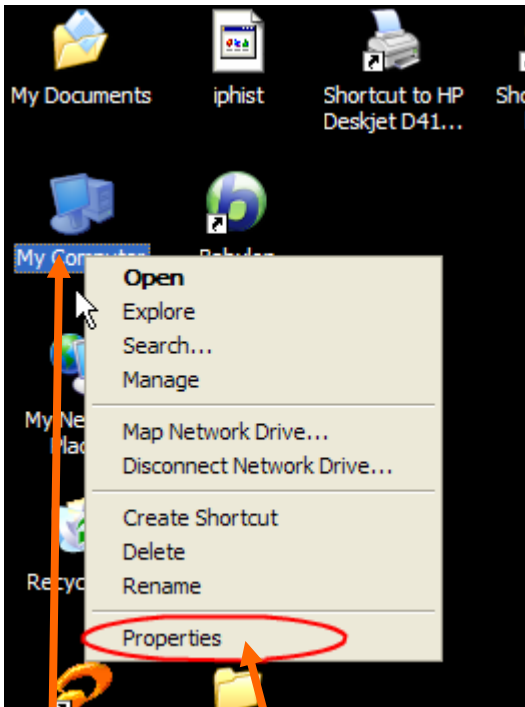
Start → Control Panel → NetWork → **File and Print Sharing**

(internet explorer)



Holoo

Produced by Torfehnegar company

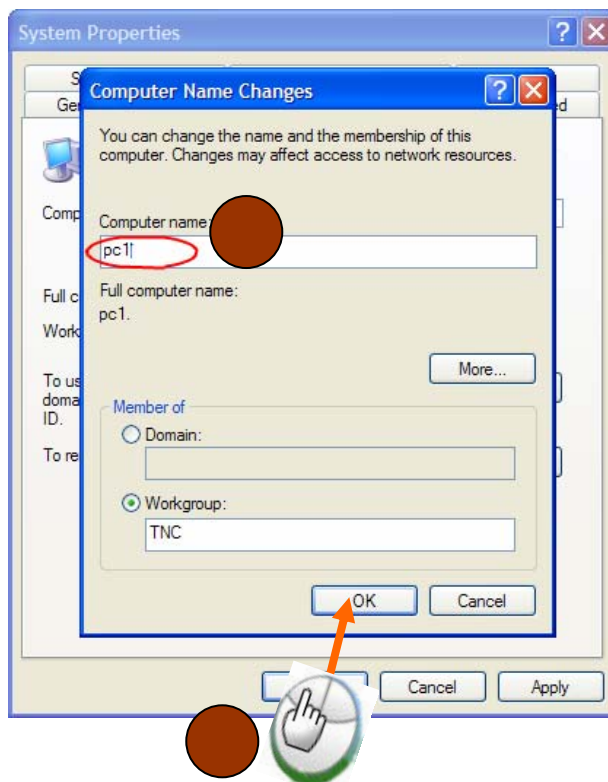


OK

My Computer

Properties

Change Computer Name





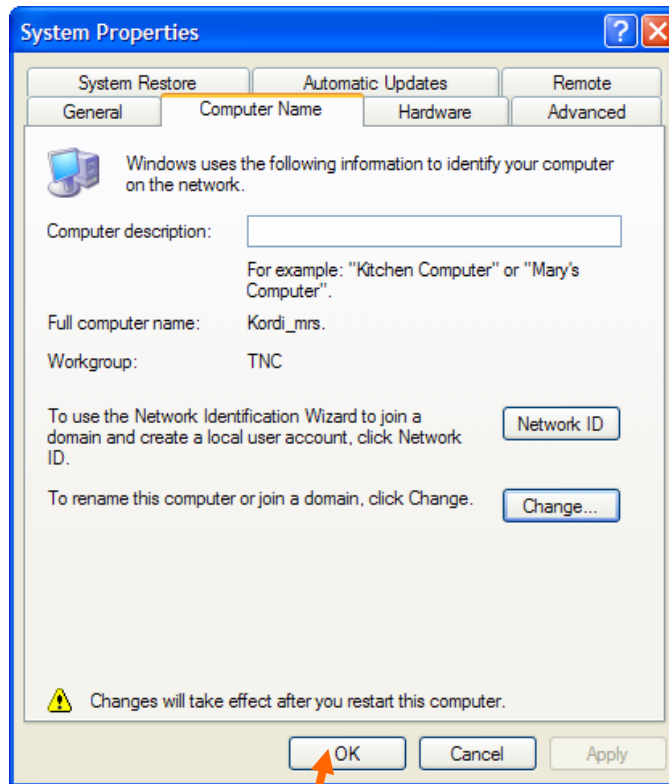
Holoo

Produced by Torfehnegar company

restart

OK

System Properties





Holoo

Produced by Torfehnegar company

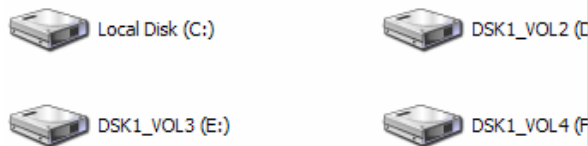


Auto run

Files Stored on This Computer



Hard Disk Drives



Devices with Removable Storage



My Computer

Autoplay

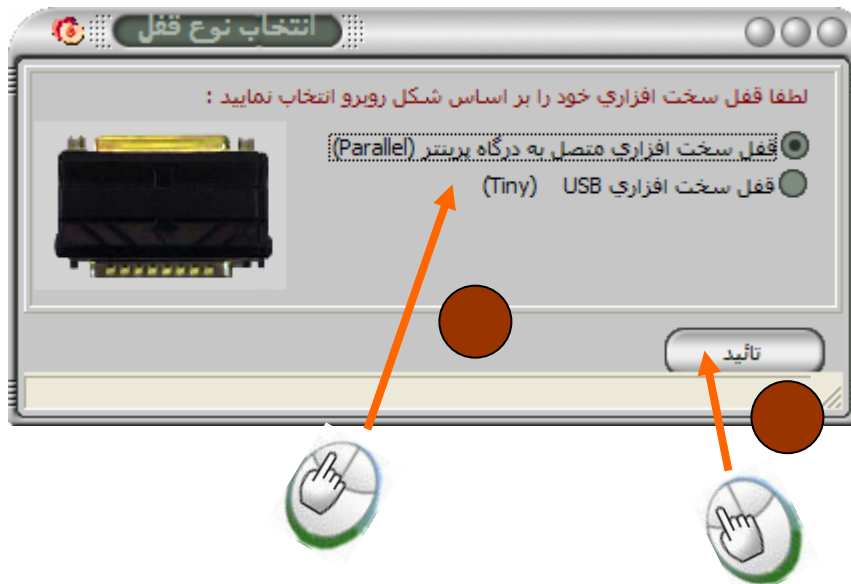


Holoo

Produced by Torfehnegar company

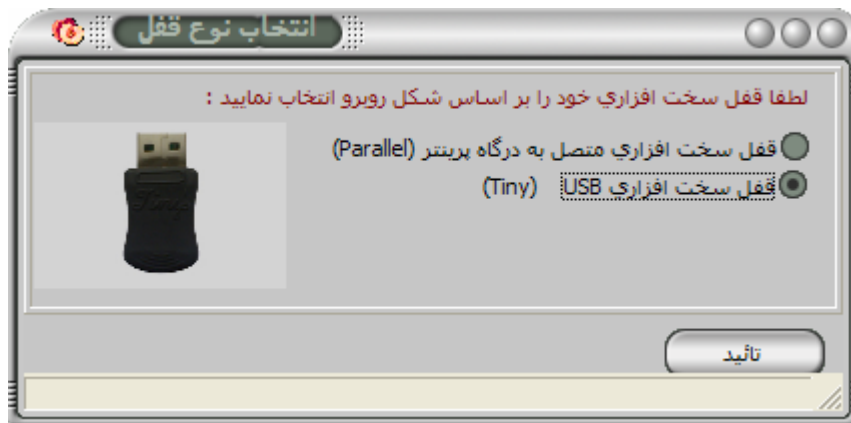
pin

:Parallel



USB

:USB



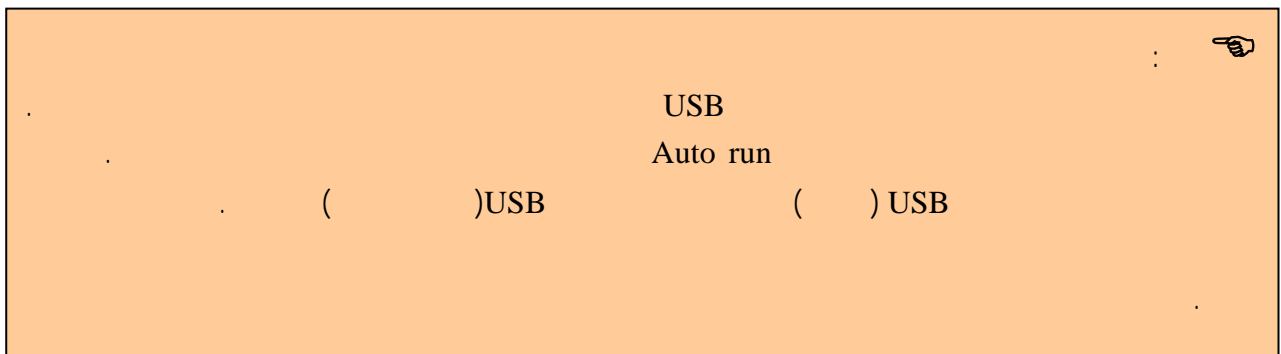
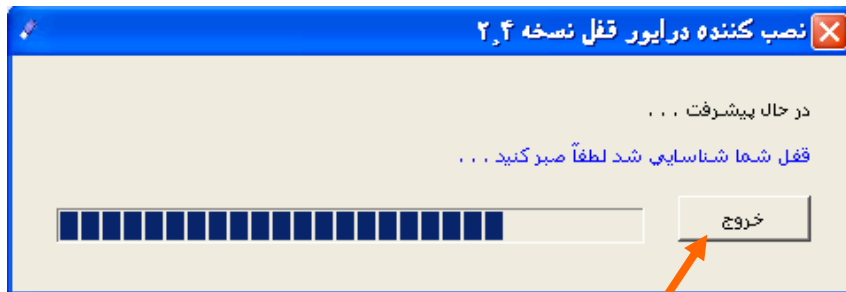
USB





Holoo

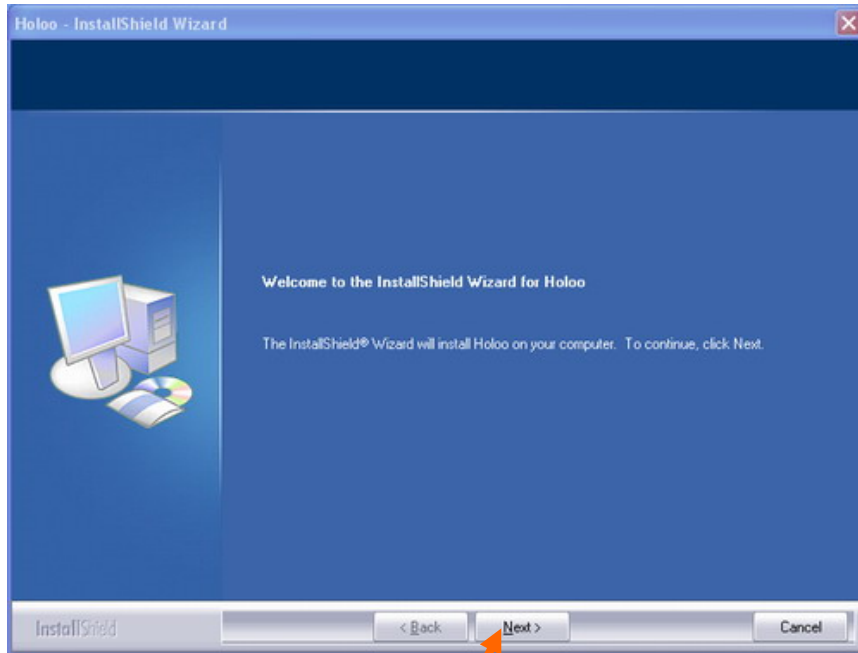
Produced by Torfehnegar company





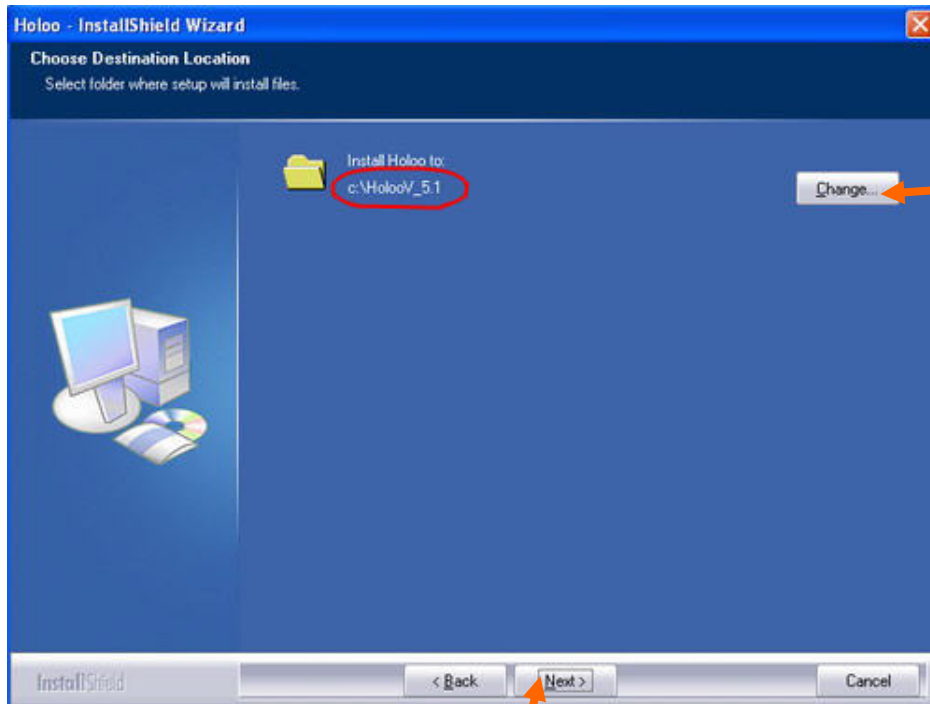
Holoo

Produced by Torfehnegar company



Next

Next (C)
Change C

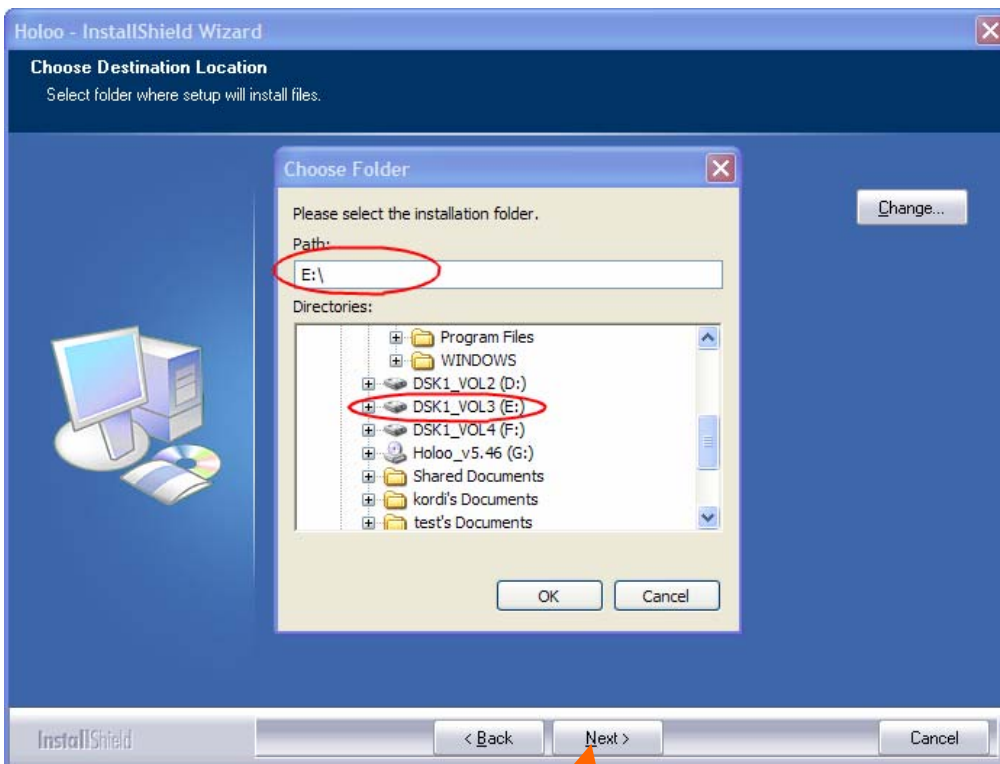
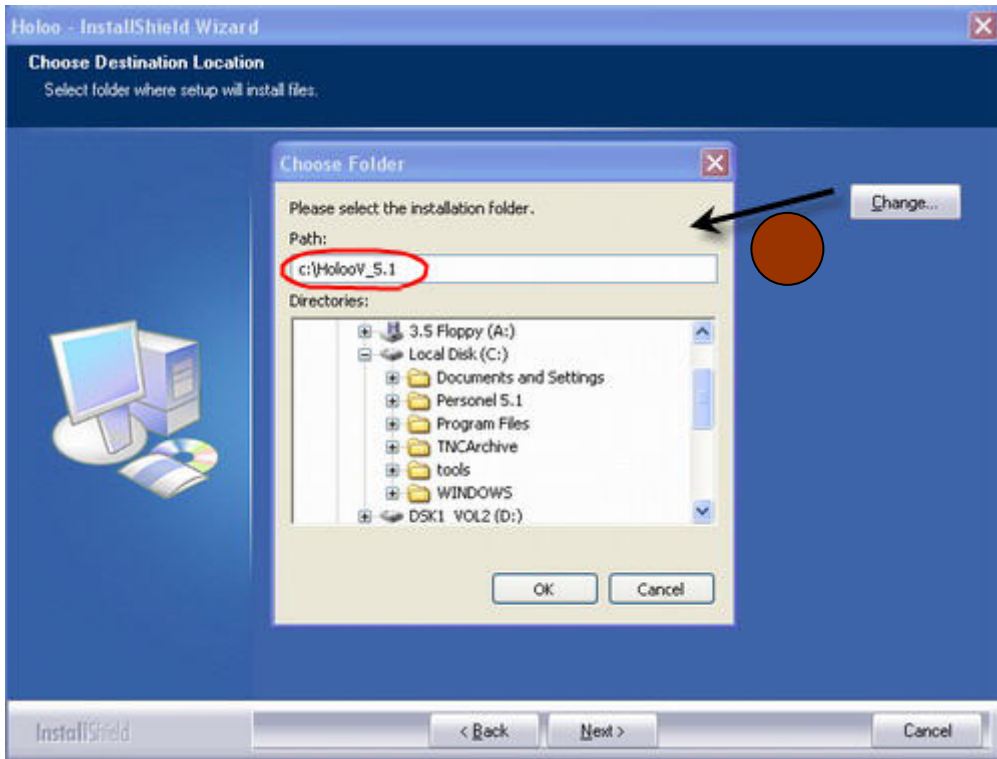




Holoo

Produced by Torfehnegar company

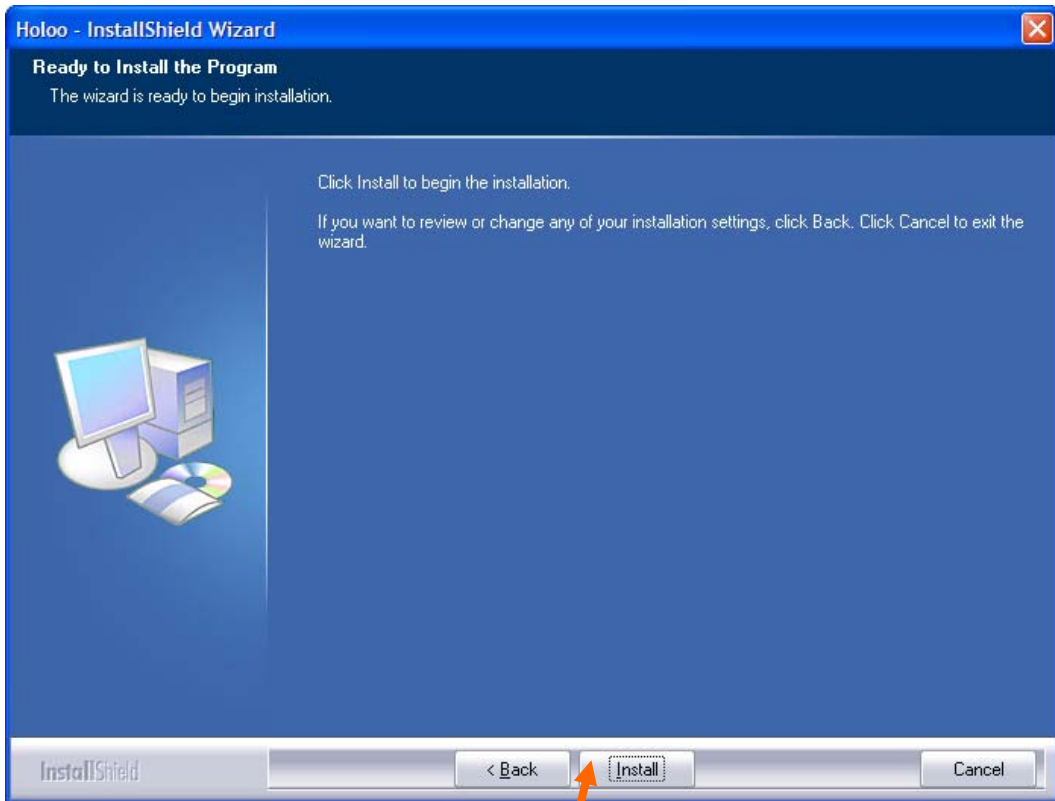
Next



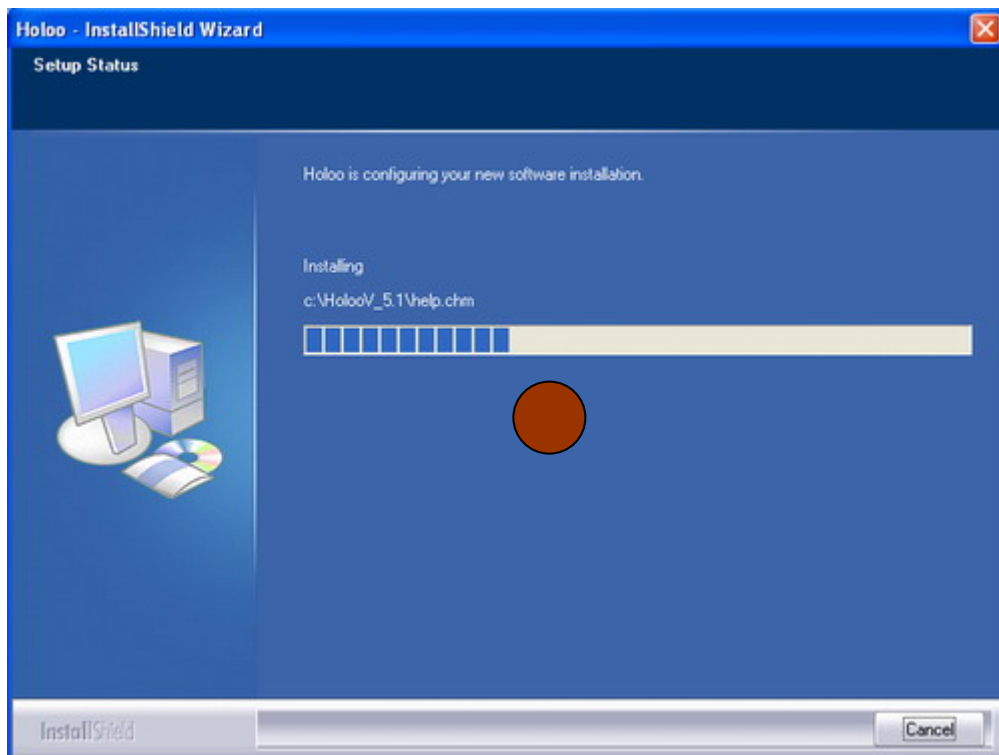


Holoo

Produced by Torfehnegar company



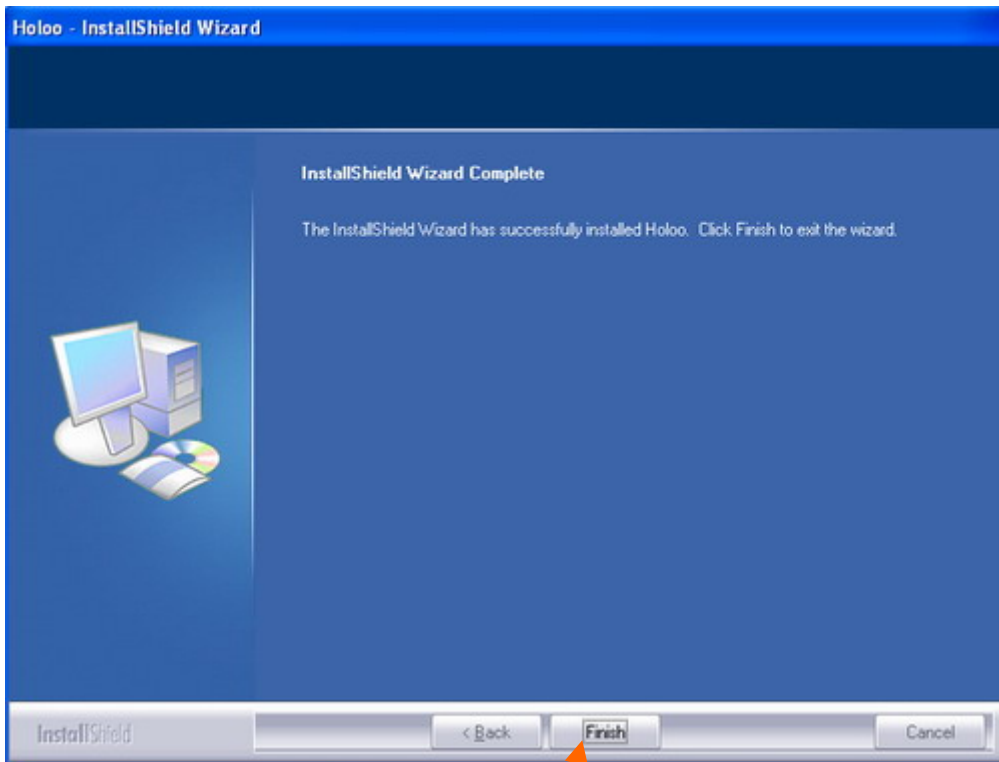
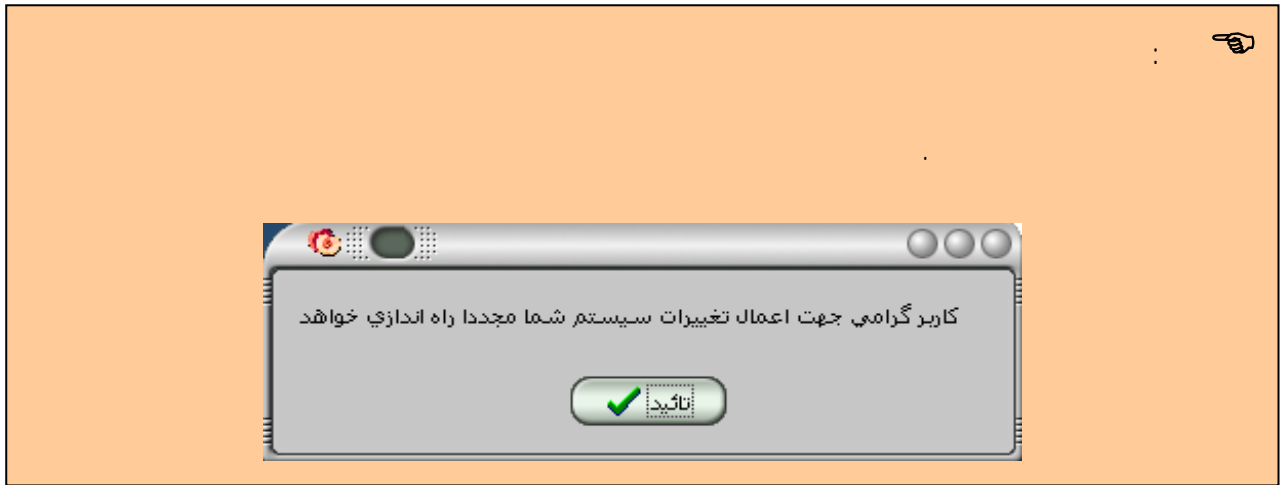
Install





Holoo

Produced by Torfehnegar company

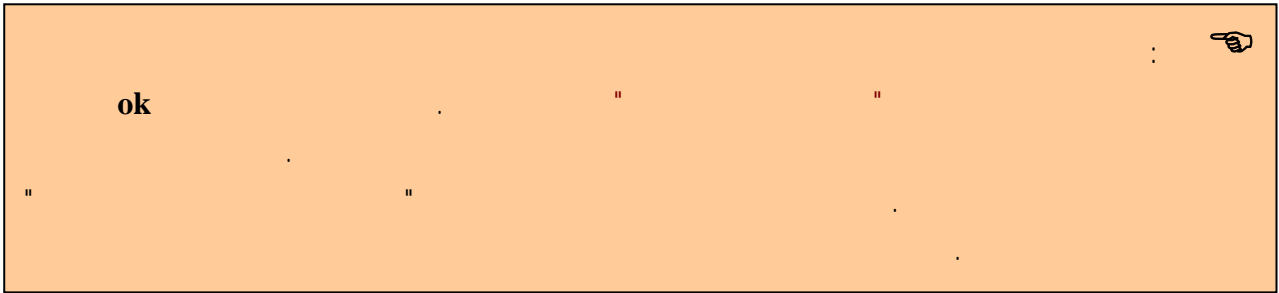


Finish

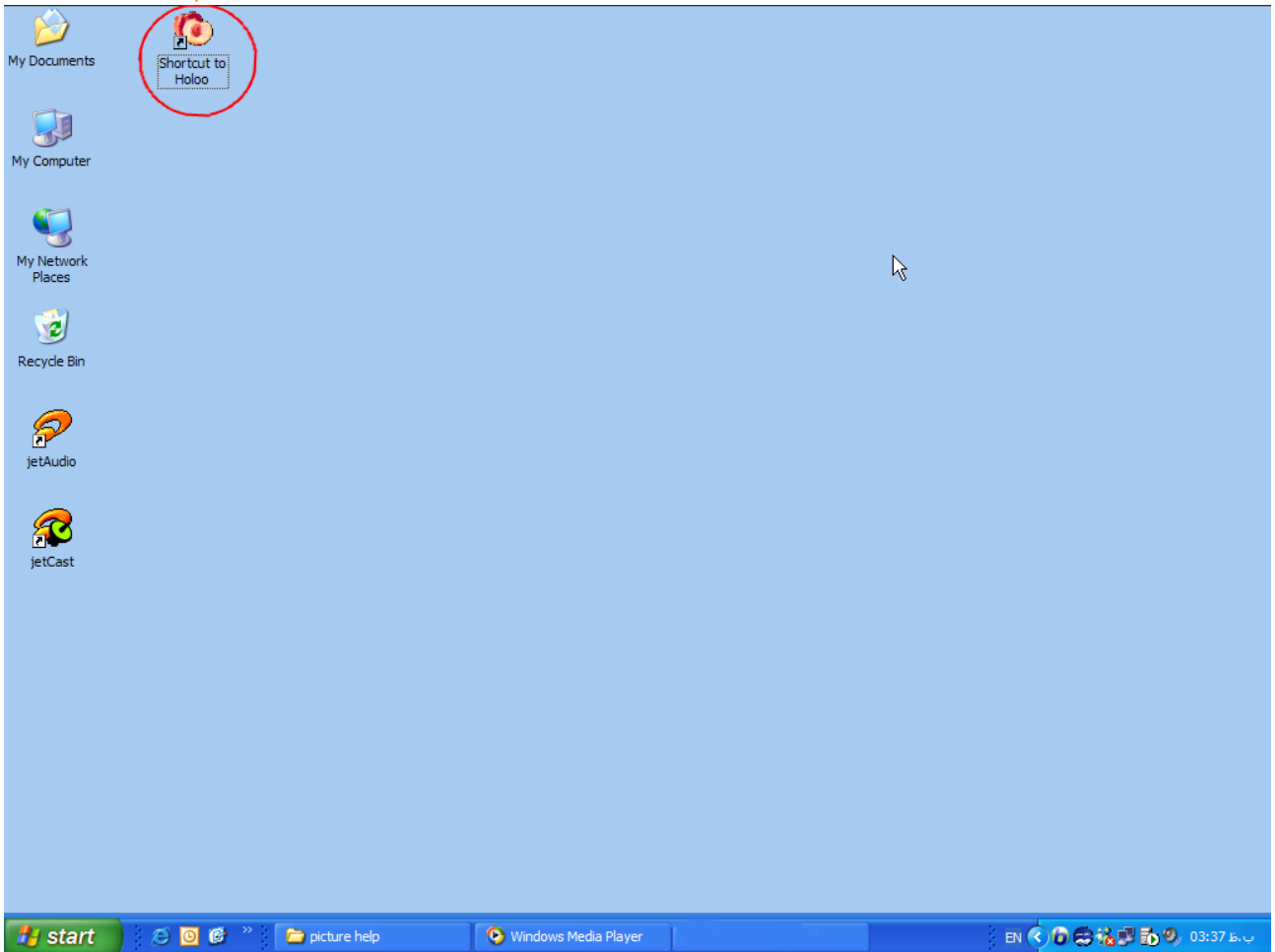
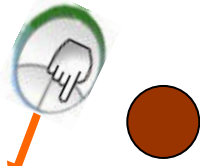


Holoo

Produced by Torfehnegar company



Desktop



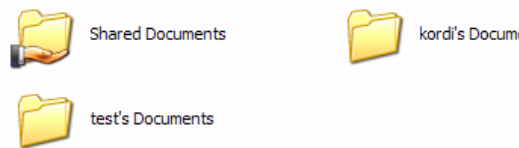


Holoo

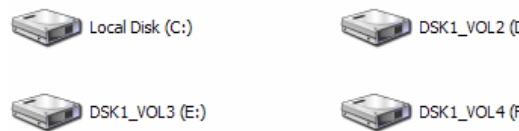
Produced by Torfehnegar company



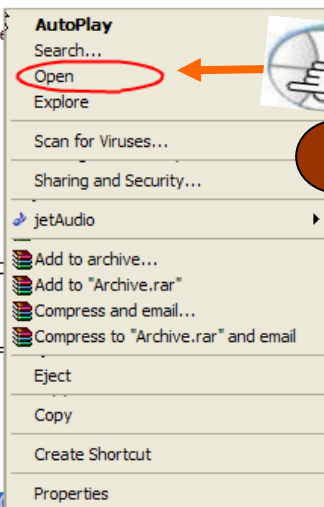
Files Stored on This Computer



Hard Disk Drives



Devices with Removable Storage

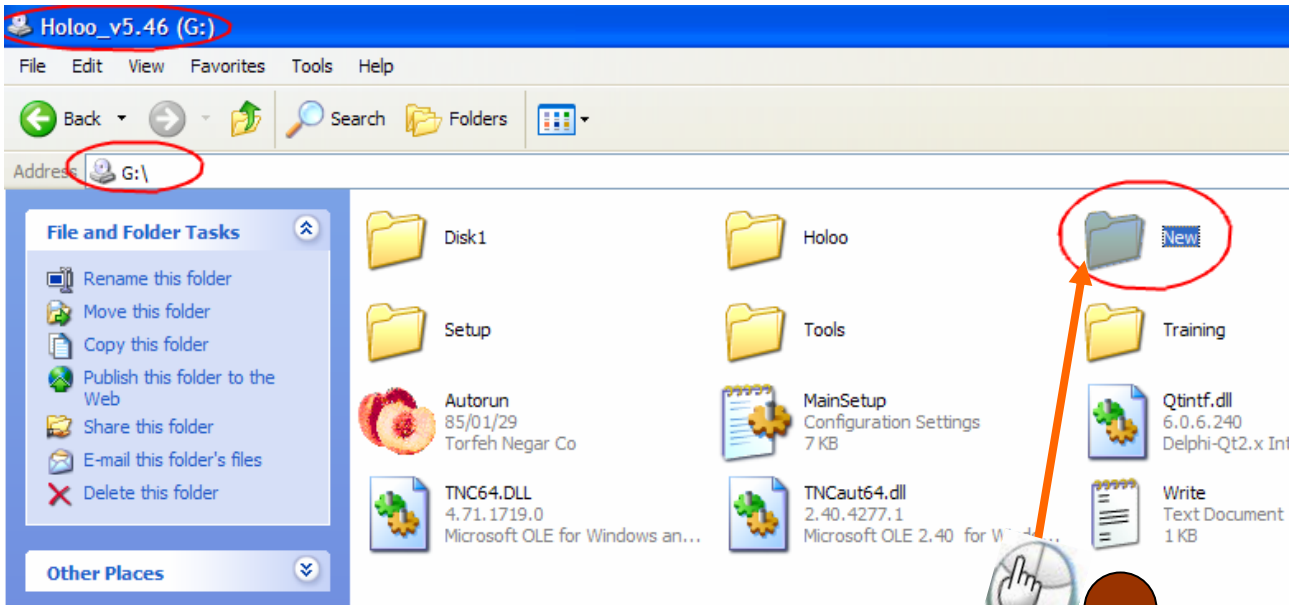




Holoo

Produced by Torfehnegar company

My Computer
Open

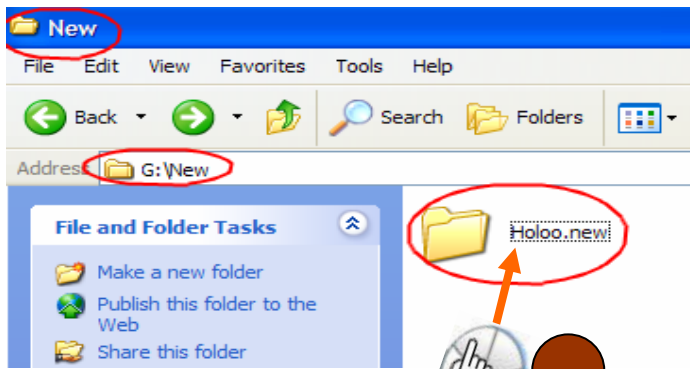


New

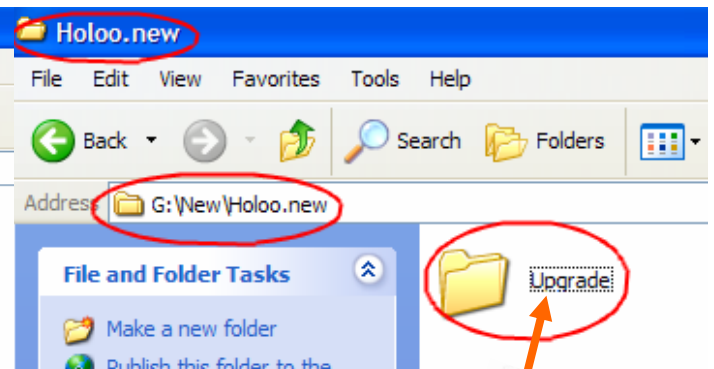
Holoo.new

Upgrade

Holoo.new



Paste

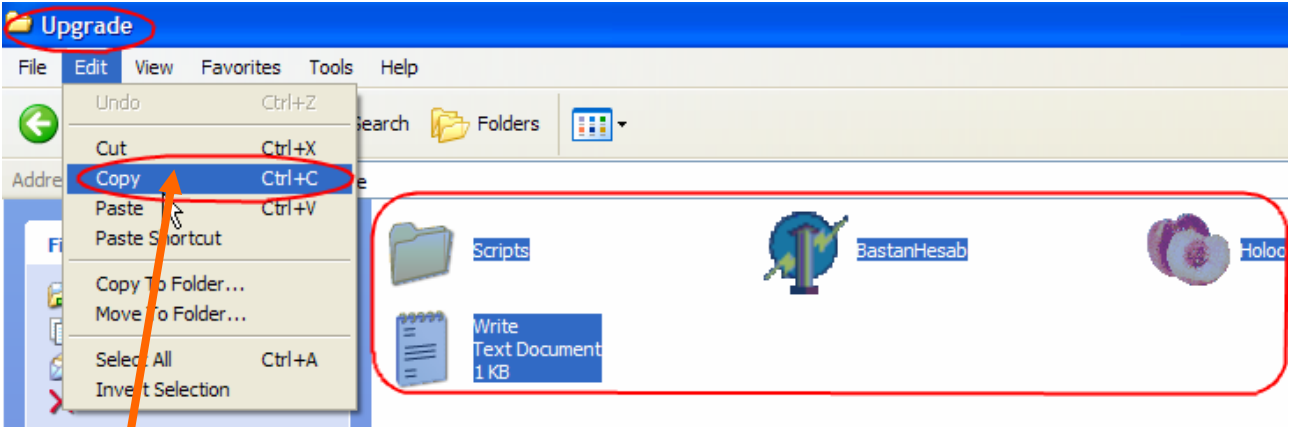


Upgrade



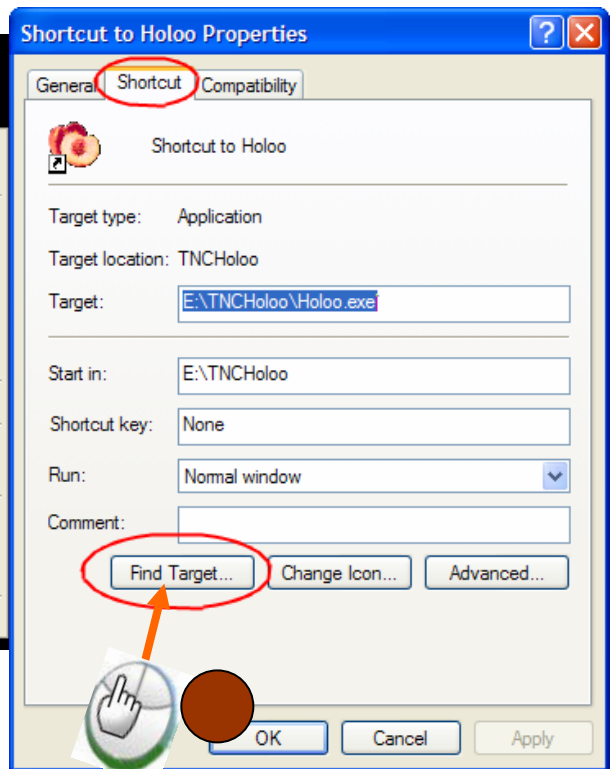
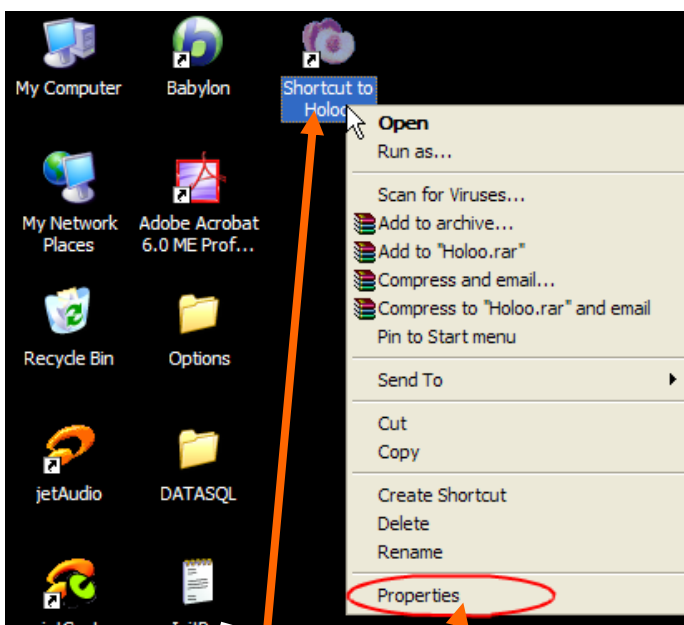
Holoo

Produced by Torfehnegar company



C

TNCHoloo



Desktop

Properties

Find Target



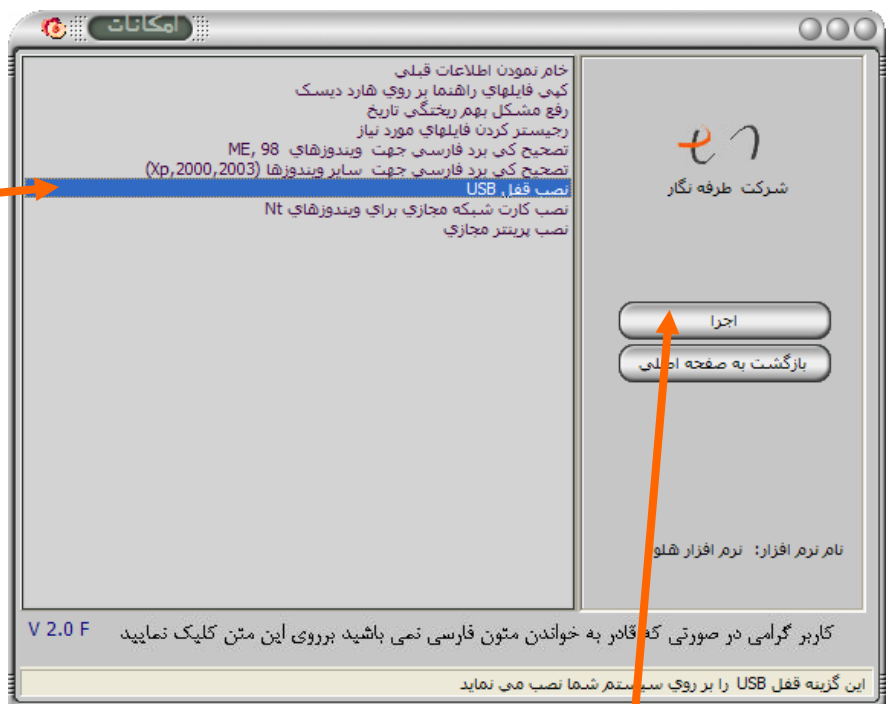
Holoo

Produced by Torfehnegar company

USB

USB

Auto run





Holo

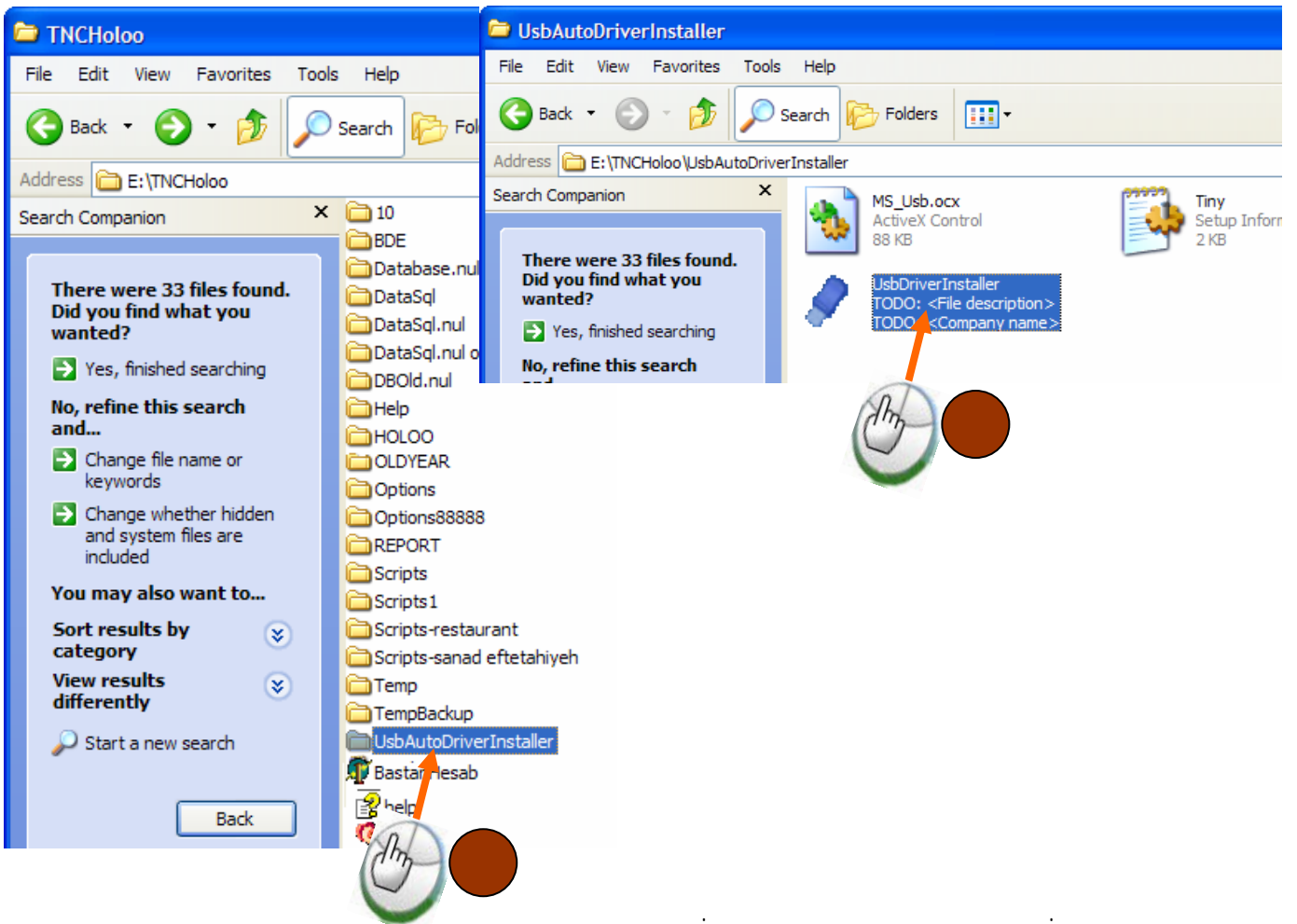
Produced by Torfehnegar company

"USB "

USB

UsbAutoDriverInstaller

UsbDriverInstaller



UsbAutoDriverInstaller_

Setup



Holoo

Produced by Torfehnegar company

The screenshot shows two overlapping Windows Explorer windows. The left window displays the folder 'E:\TNCHoloo' with a list of subfolders and files. The right window shows the contents of 'E:\TNCHoloo\UsbAutoDriverInstaller_2', with the file name circled in red. A hand cursor icon is positioned over the file name in both windows, with an arrow pointing from the icon in the right window to the icon in the left window.

The screenshot shows the 'Tiny Dongle Driver Setup Wizard' dialog box. The text reads: 'Welcome to the Tiny Dongle Driver Setup Wizard' and 'Select whether you want to repair or remove Tiny Dongle Driver.' There are two radio buttons: 'Repair Tiny Dongle Driver' (which is selected and circled in red) and 'Remove Tiny Dongle Driver'. At the bottom, there are three buttons: 'Cancel', '< Back', and 'Finish'. A hand cursor icon is positioned over the 'Finish' button, with an arrow pointing from the icon to the button.



Holoo

Produced by Torfehnegar company

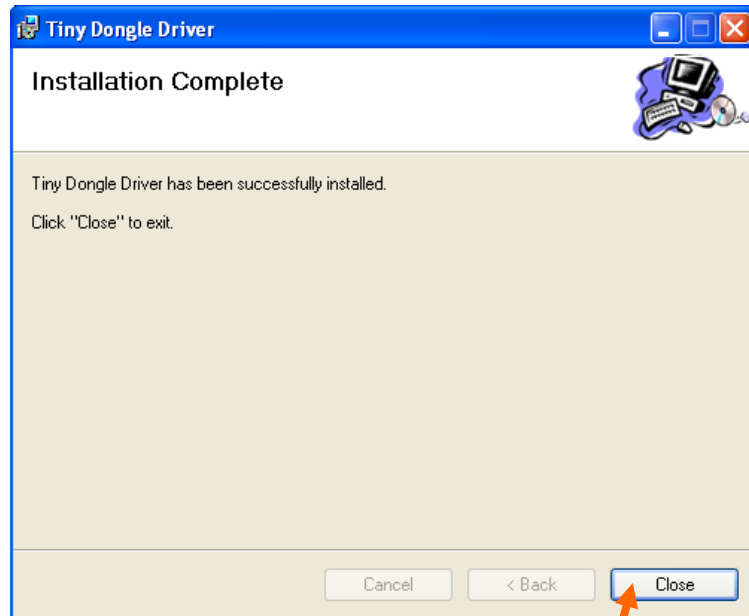
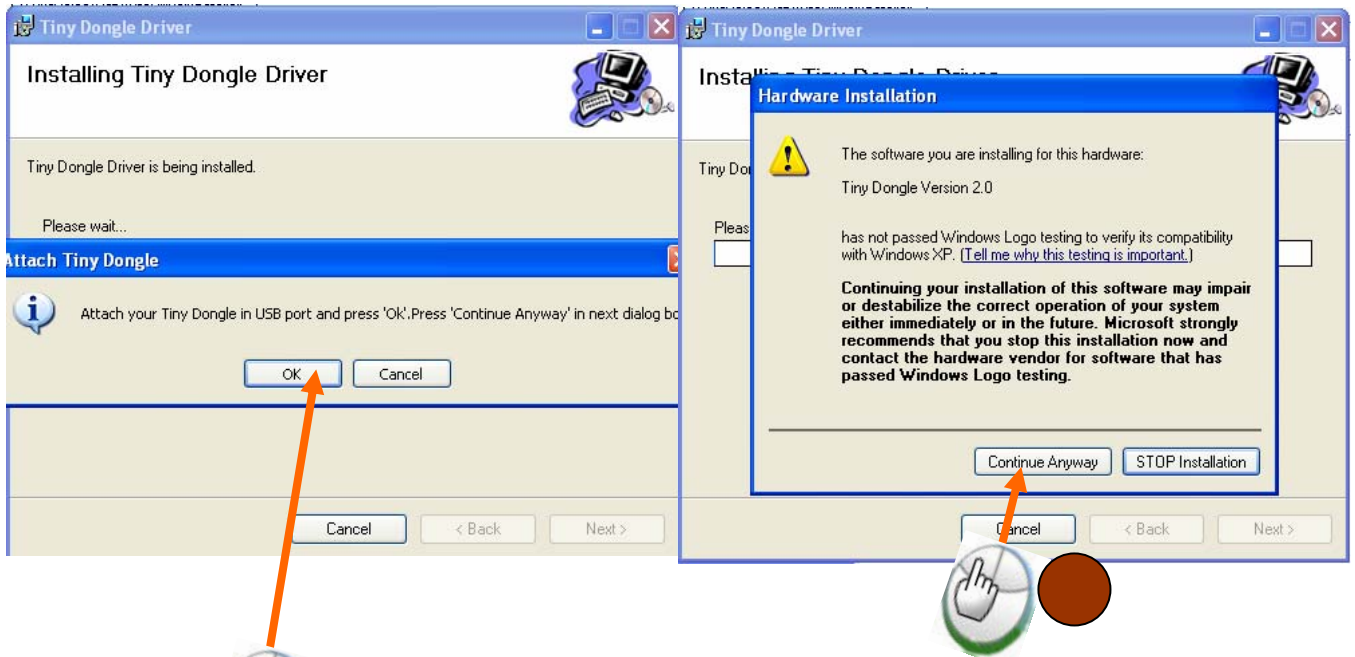
Finish

Repair Tiny Dongle Driver

OK

Continue anyway

Close





Holoo

Produced by Torfehnegar company

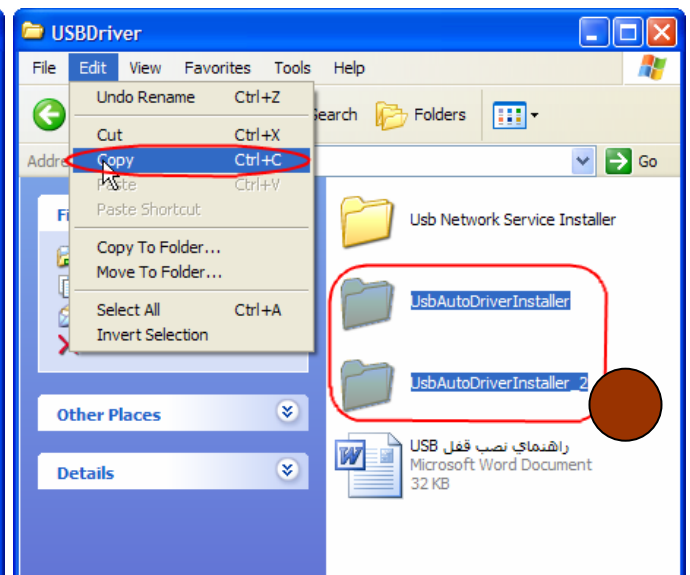
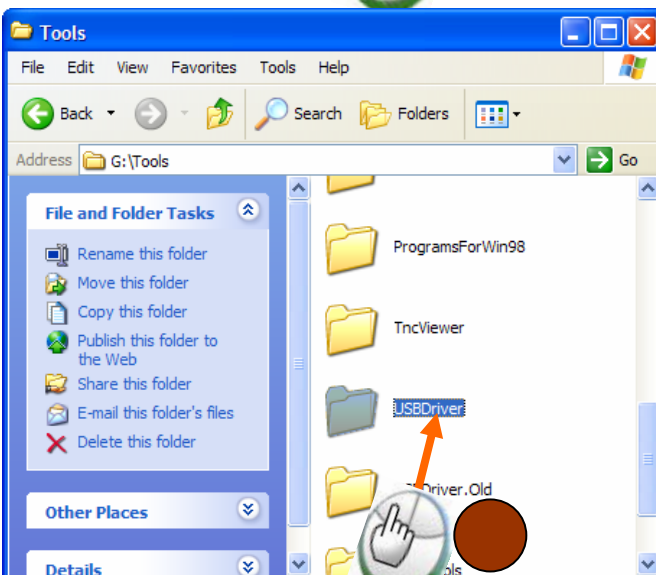
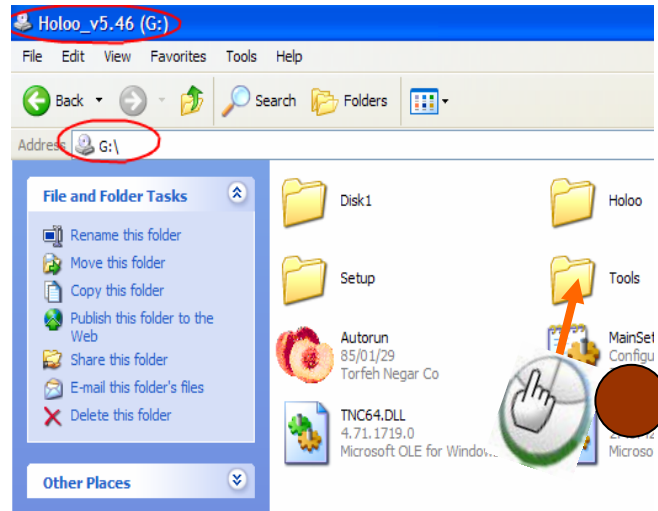
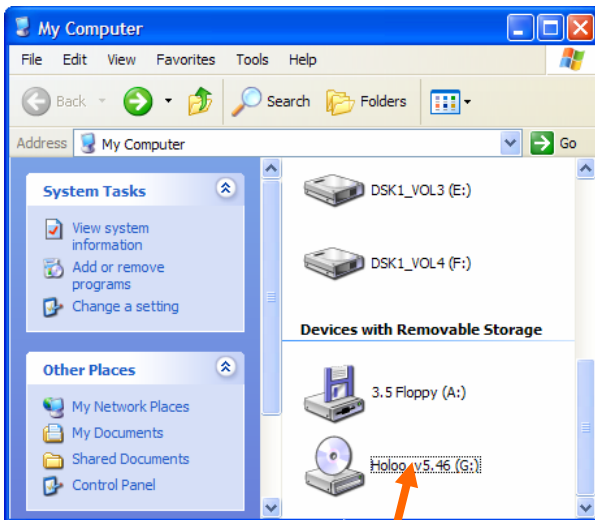
UsbAutoDriverInstaller_ UsbAutoDriverInstaller

Tools

USBDriver

Copy UsbAutoDriverInstaller_ UsbAutoDriverInstaller

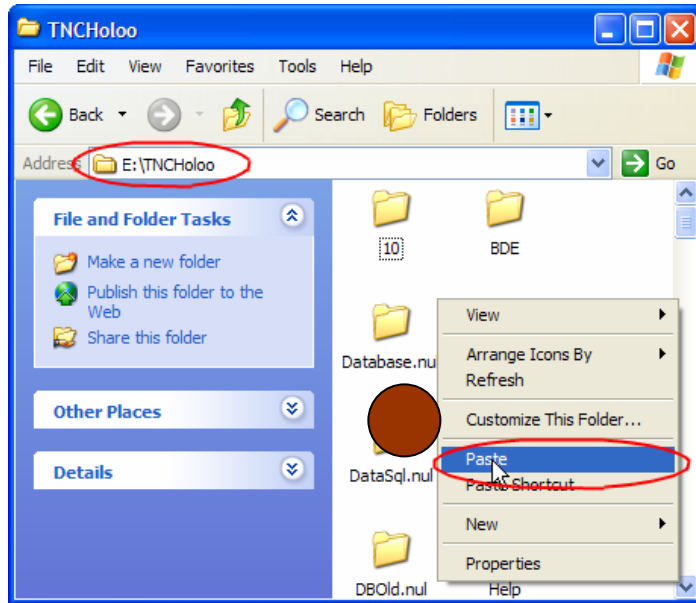
Paste



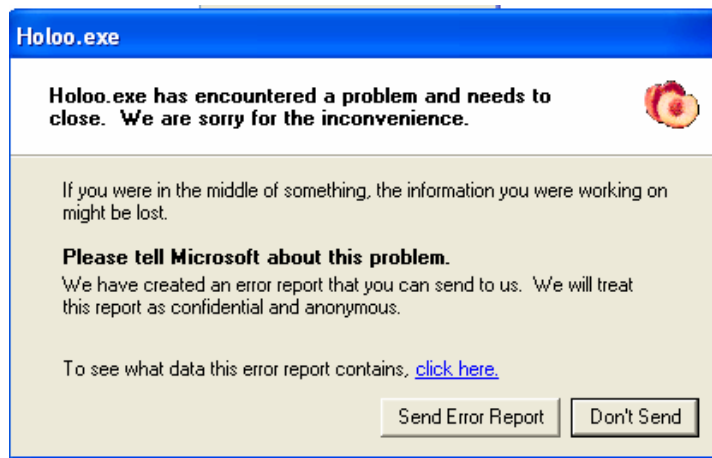


Holoo

Produced by Torfehnegar company



Ms_usb.ocx



Ms_usb.ocx

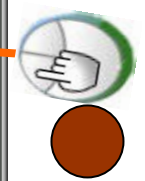
Cd Rom

(Register ocx')



Holoo

Produced by Torfehnegar company



Start
Run
Run
Regsvr



Holo

Produced by Torfehnegar company

(Regsvr

) Run

Ms_usb.ocx

(drag and drop) .

Run

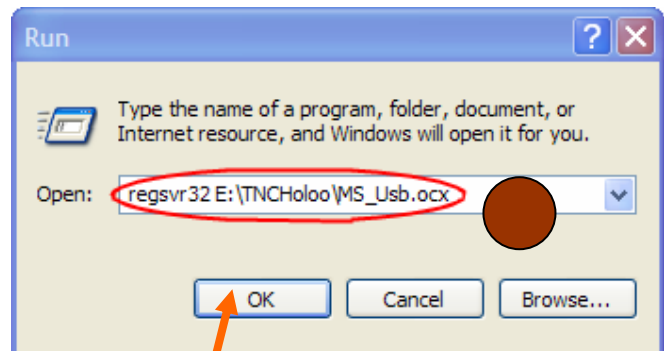
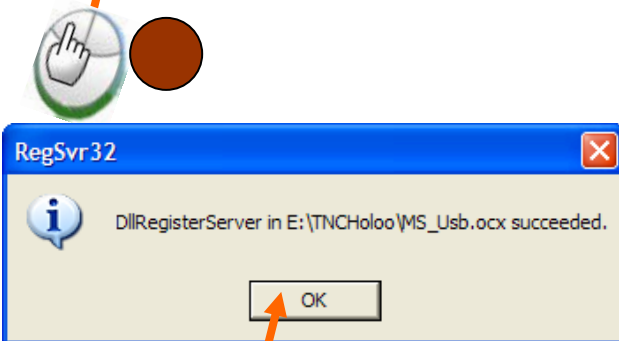
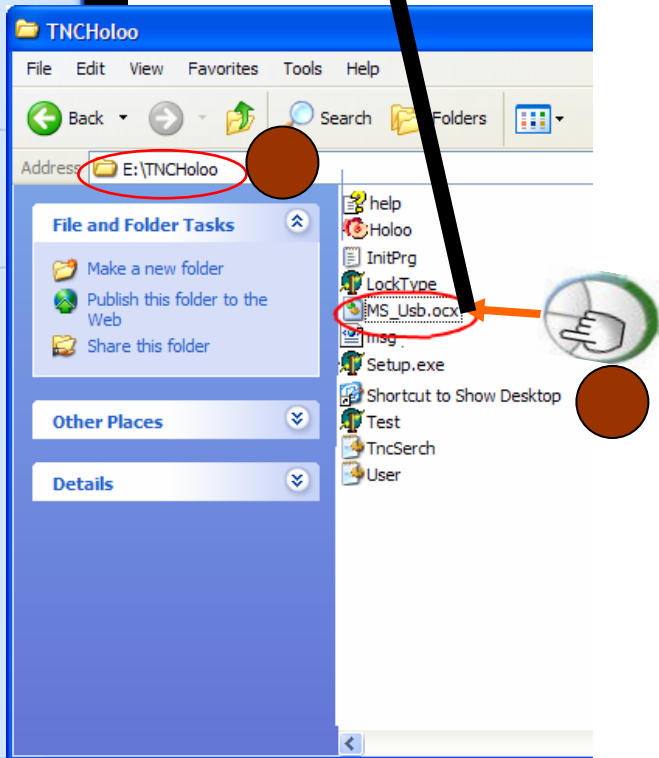
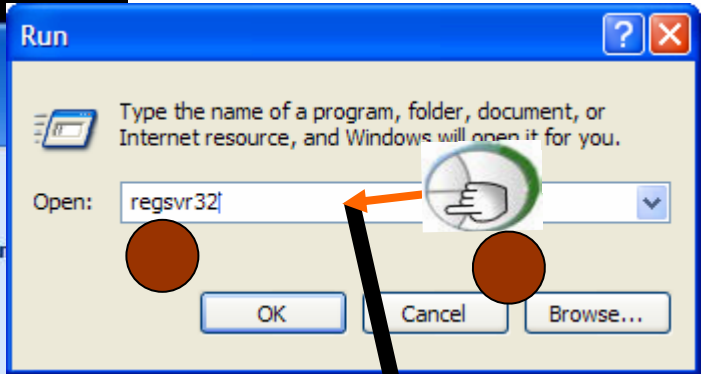
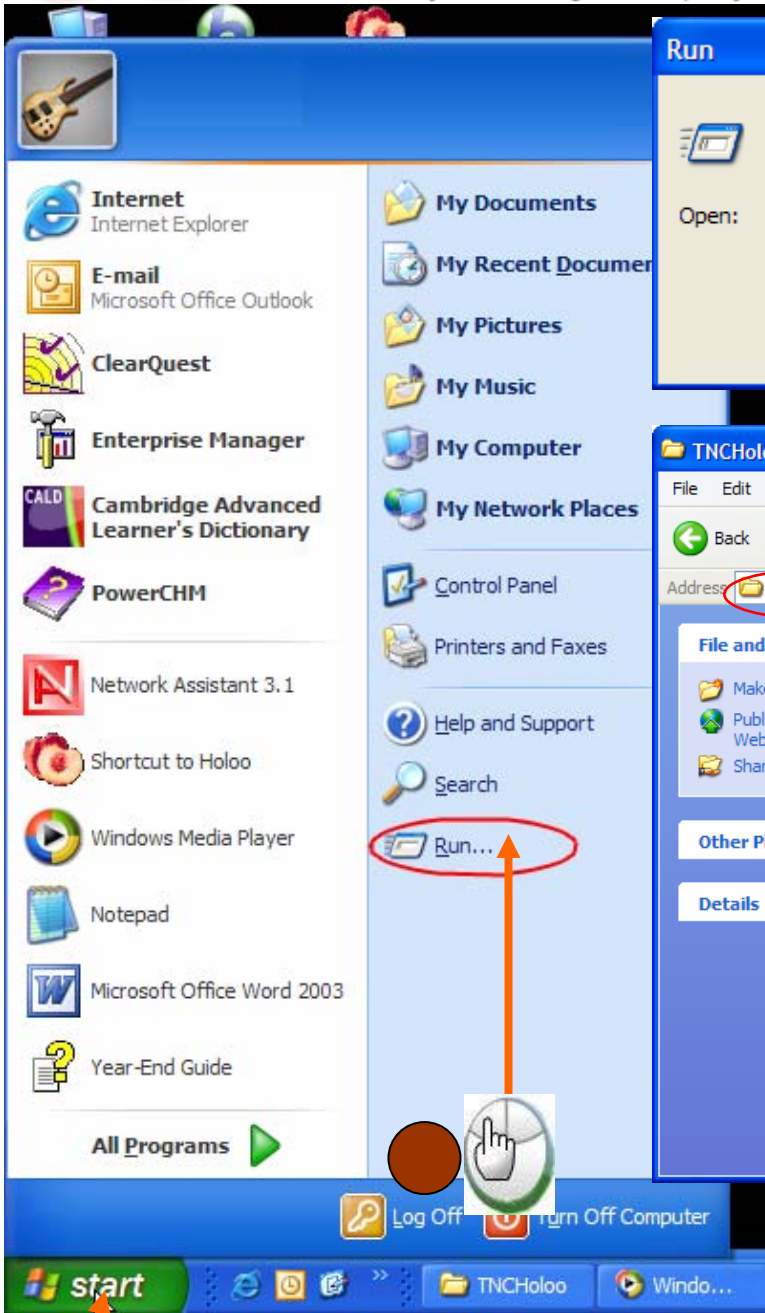
OK

OK



Holoo

Produced by Torfehnegar company





Holoo

Produced by Torfehnegar company

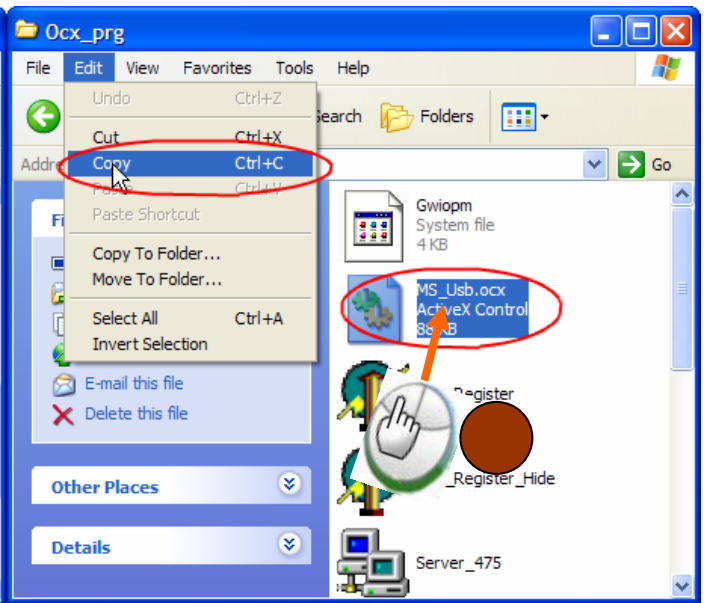
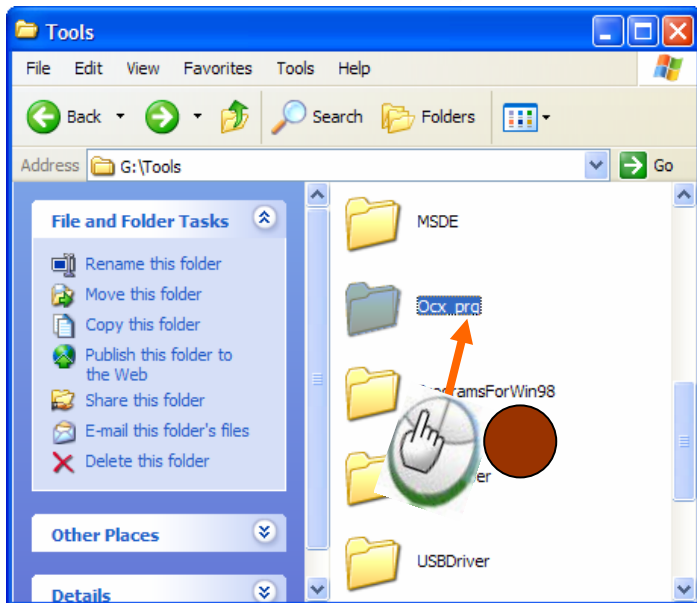
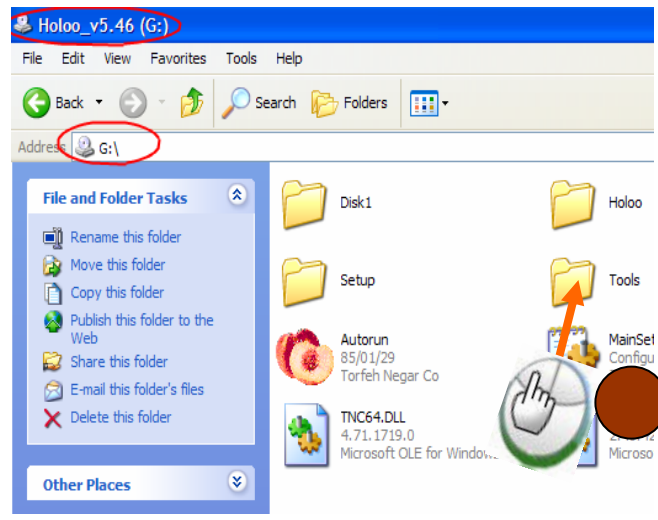
Ms_usb.ocx

Tools

Ocx_prg

Copy Ms_Usb.ocx

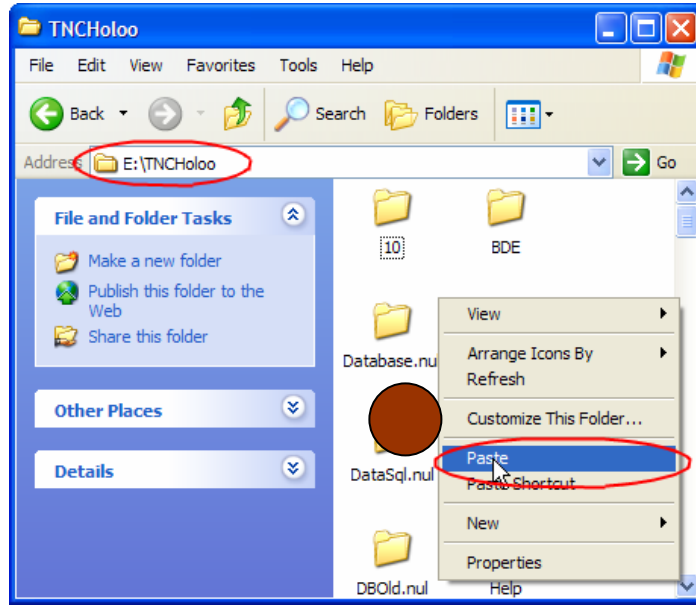
Paste





Holoo

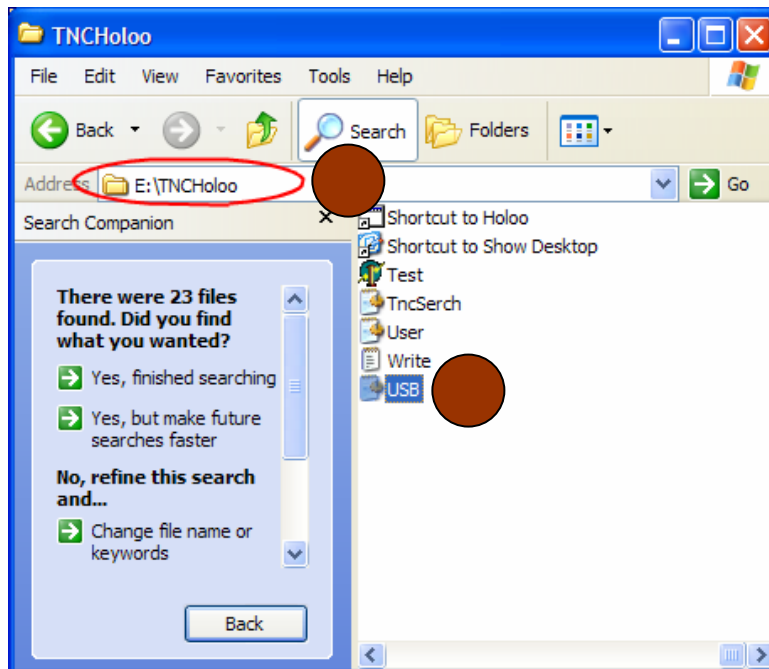
Produced by Torfehnegar company



Parallel •

Delete

Usb.ini



()



Holo

Produced by Torfehnegar company

) Delete •

Set up (•

Integrated Peripherals (← →) •

Page Down Page Up Onboard Parallel Port •

Page Down Page Up Onboard Parallel Mode IRQ / •

Onboard Set Up Normal •

Epp Parallel Mode •

Spp Onboard Parallel Mode •

Ecp Ecp+Epp

(restart)

Cancel all document

Open •

Tools •

Ocx_prg •

Copy Gwiopm •

WINDOWS •

System •

Paste •

Back •

System •

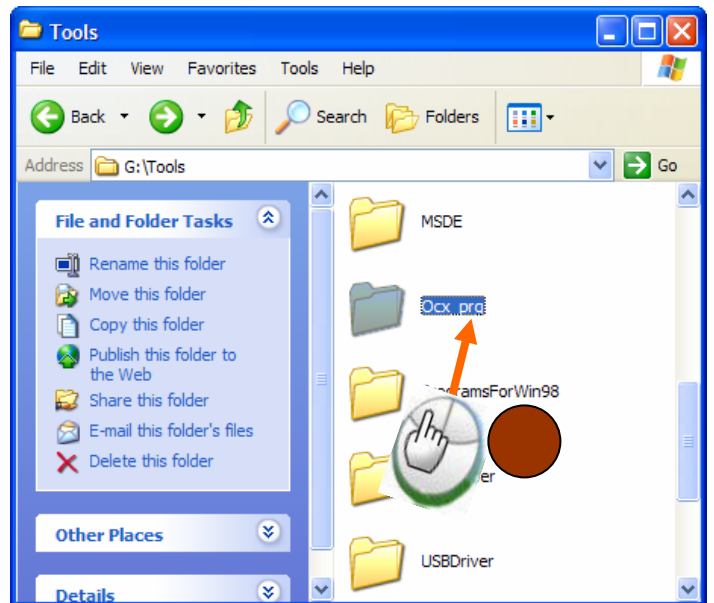
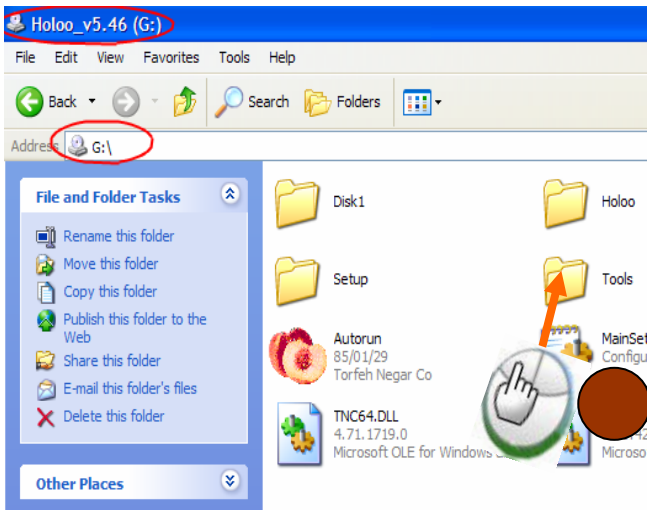
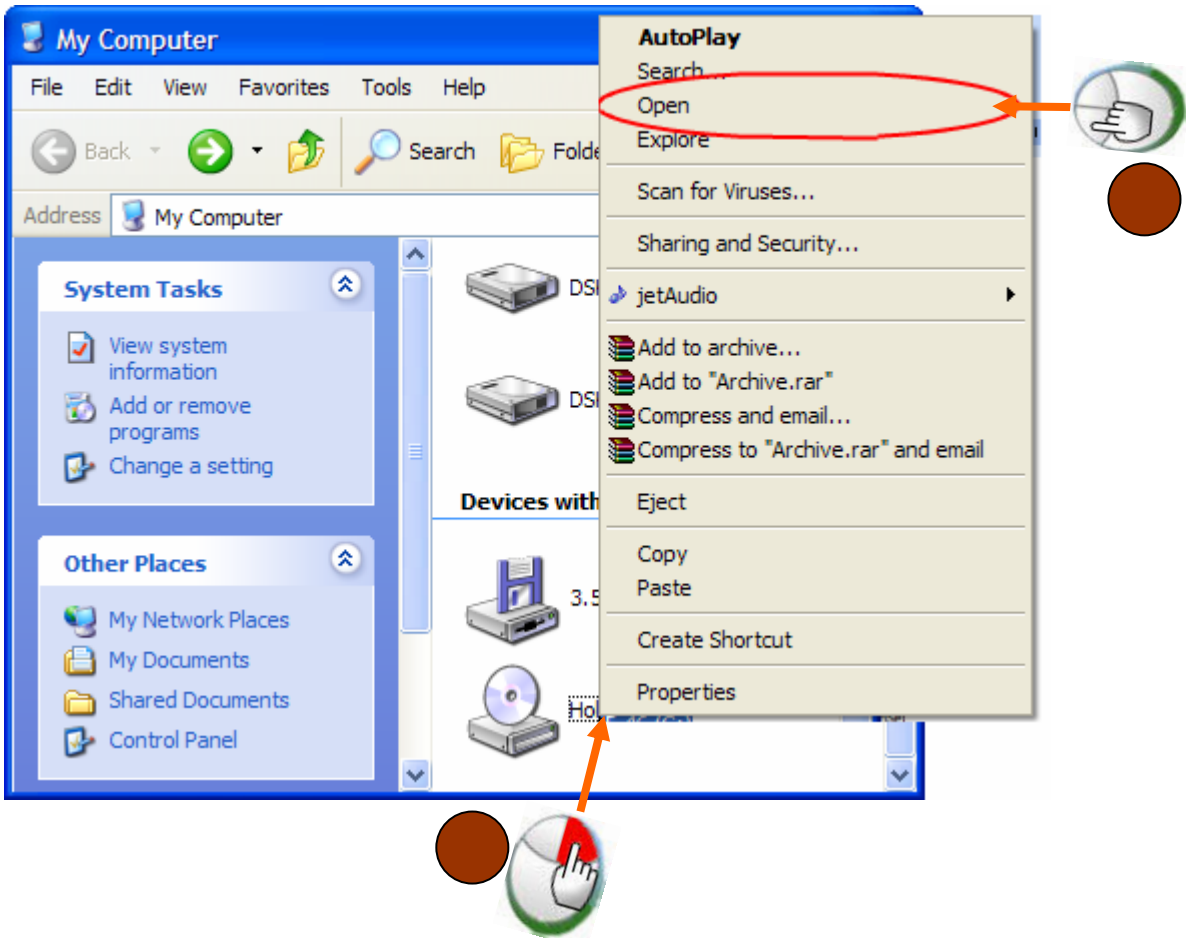
Paste •

(C)



Holoo

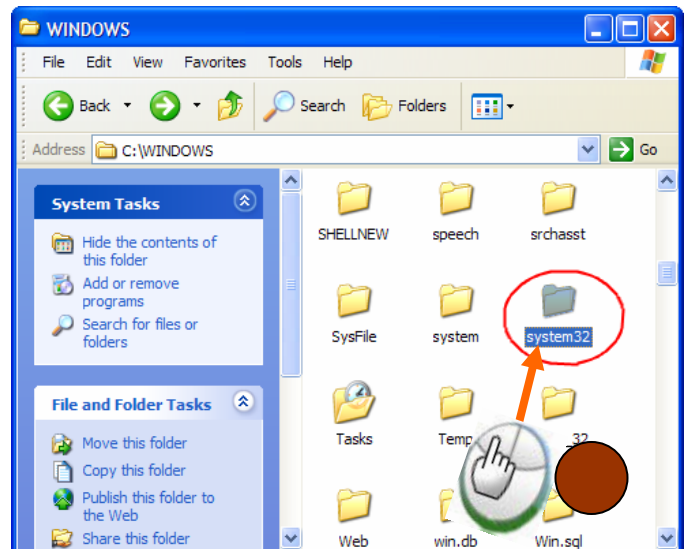
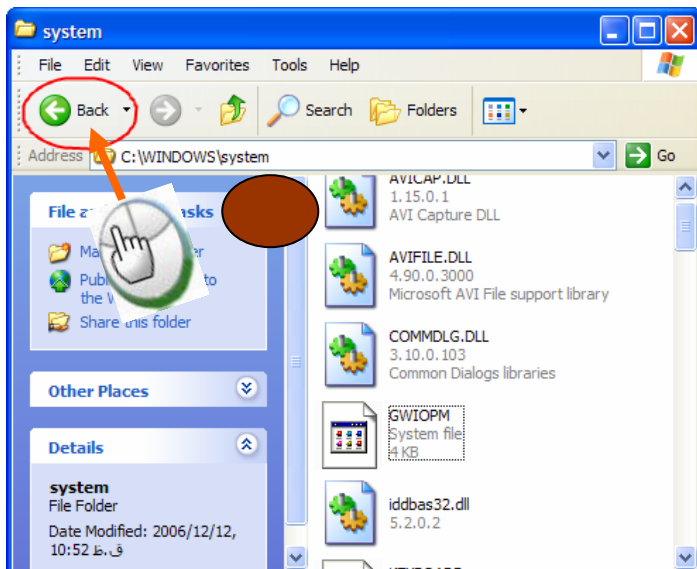
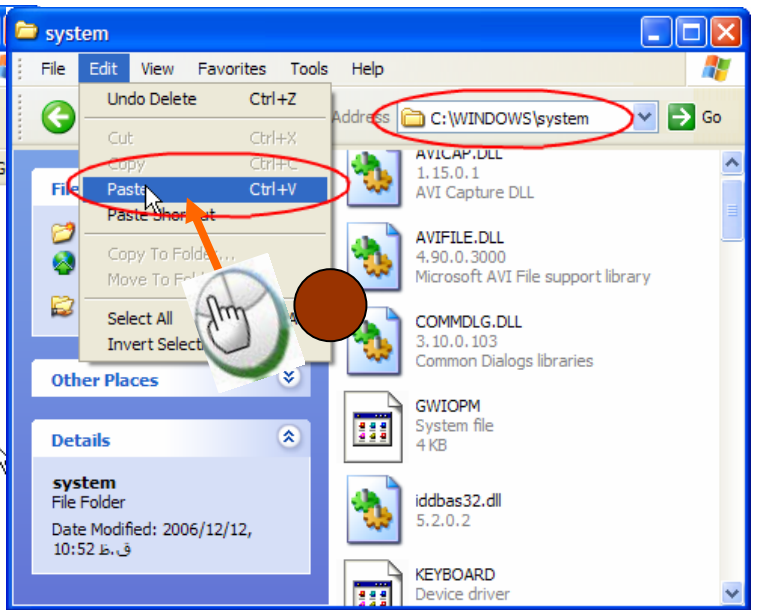
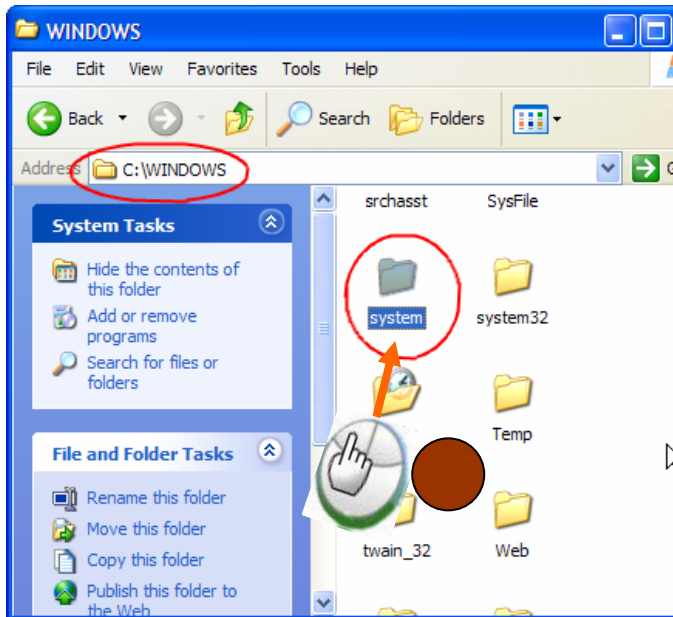
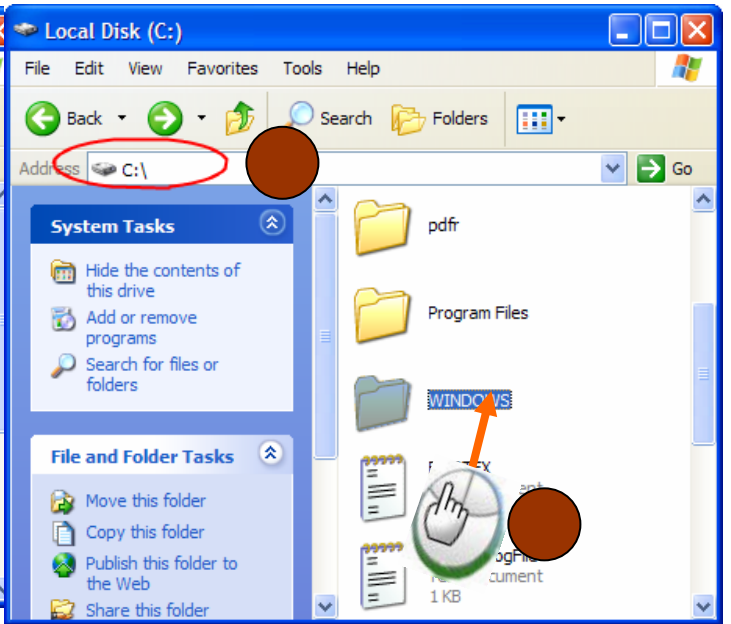
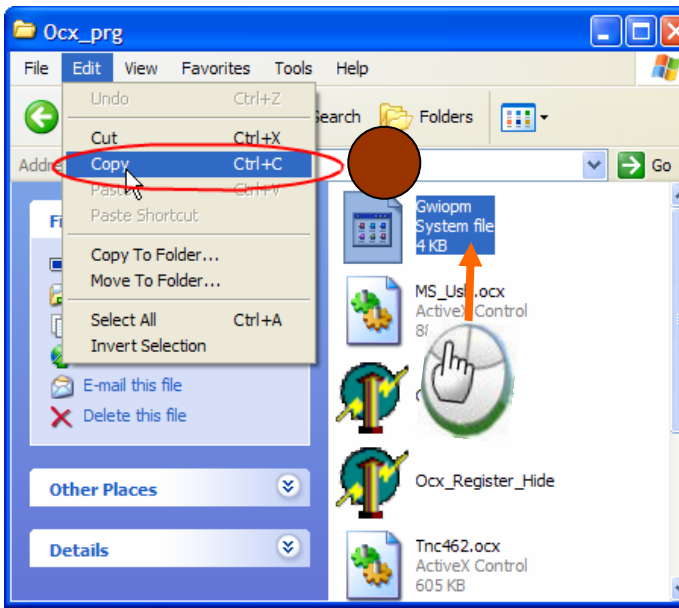
Produced by Torfehnegar company





Holoo

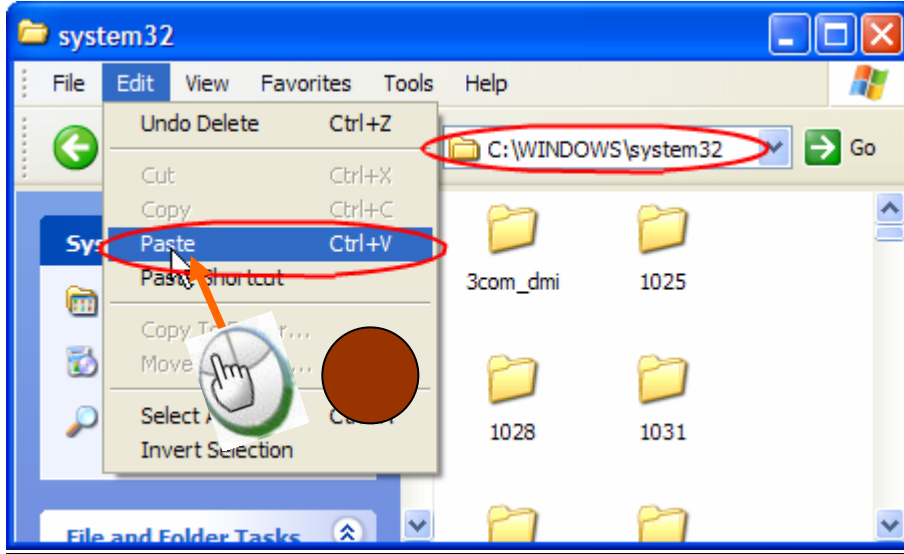
Produced by Torfehnegar company





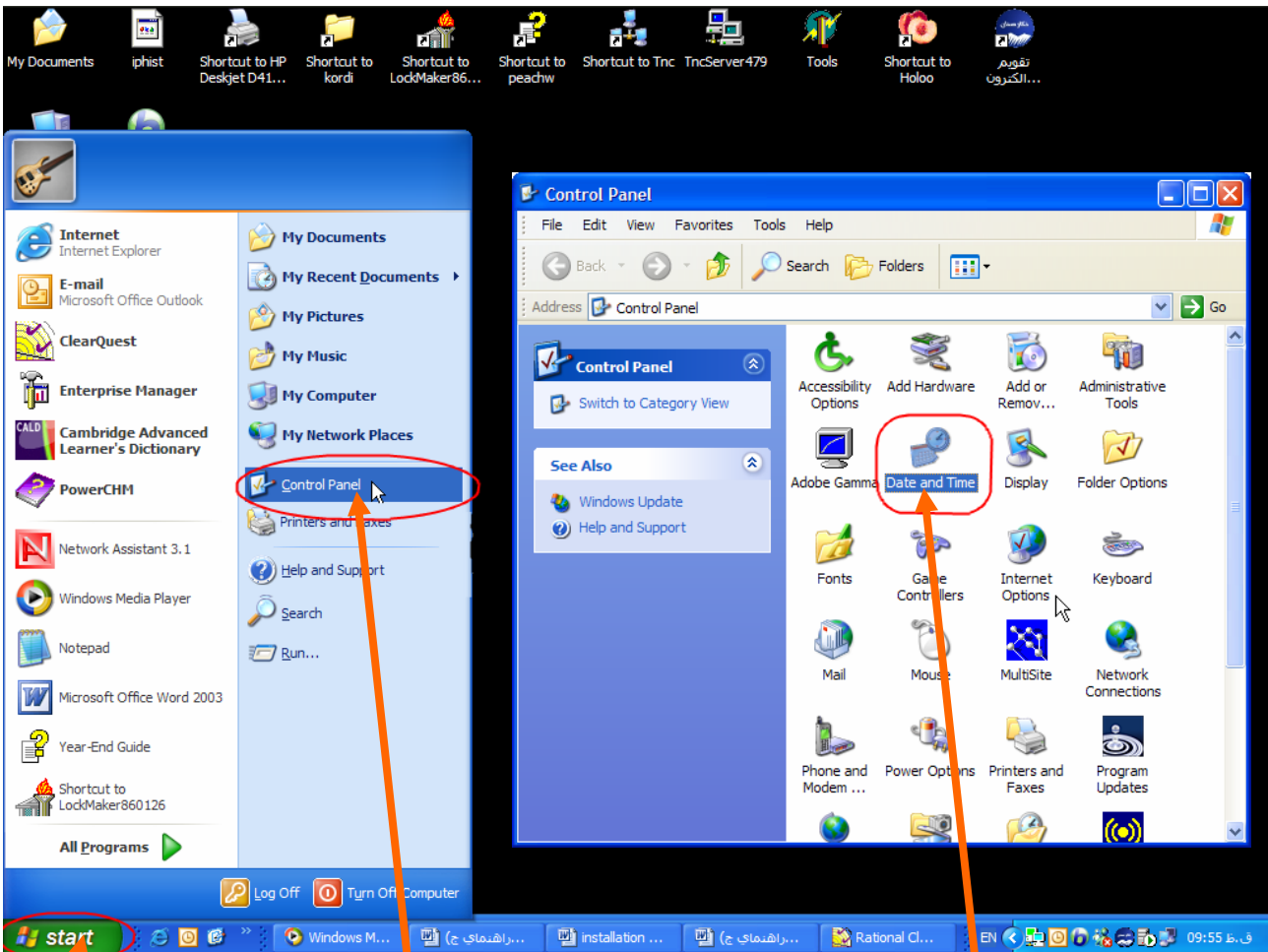
Holoo

Produced by Torfehnegar company



Start
Control Panel

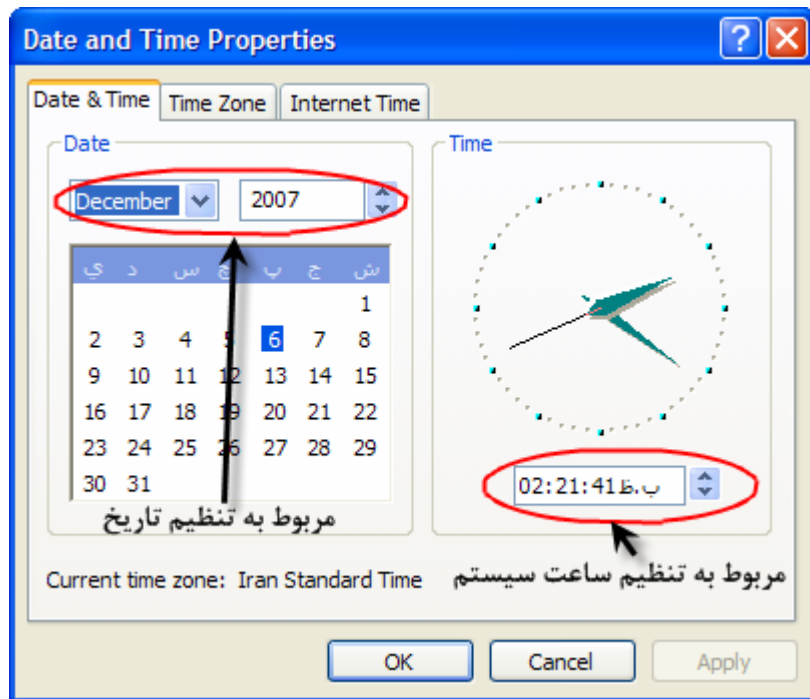
Date and Time





Holoo

Produced by Torfehnegar company



Email

HelpDoc@torfehnegar.com